



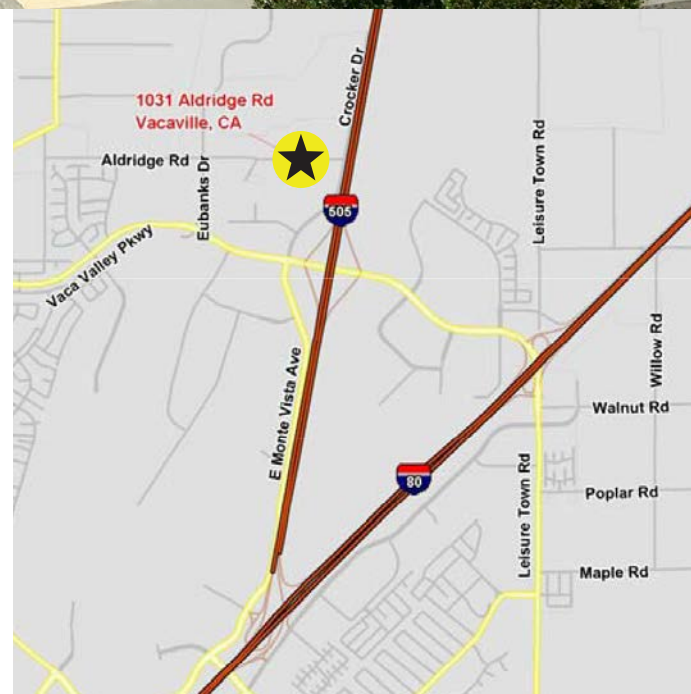
FOR LEASE
SUITE I: ±2,240

1031 Aldridge Road, Vacaville, CA



Property Overview

- ▶ Excellent Manufacturing and Service Commercial Building
- ▶ Clear Height: 16' – 17'
- ▶ Parking Ratio: 2.5/1,000
- ▶ Sprinklered (.33/3,000 SF)
- ▶ Insulated Roof, interior walls & skylights
- ▶ Immediate Access to I-80 & I-505
- ▶ Industrial Zoning
- ▶ Roll Up Door 12' x 14'
- ▶ Conditioned Warehouse
- ▶ Structural Mezzanine
- ▶ **Available immediately**



CHRIS PETRINI

CA License No. 01020505
petrini.commercial@gmail.com
Cell +1 510.507.8665

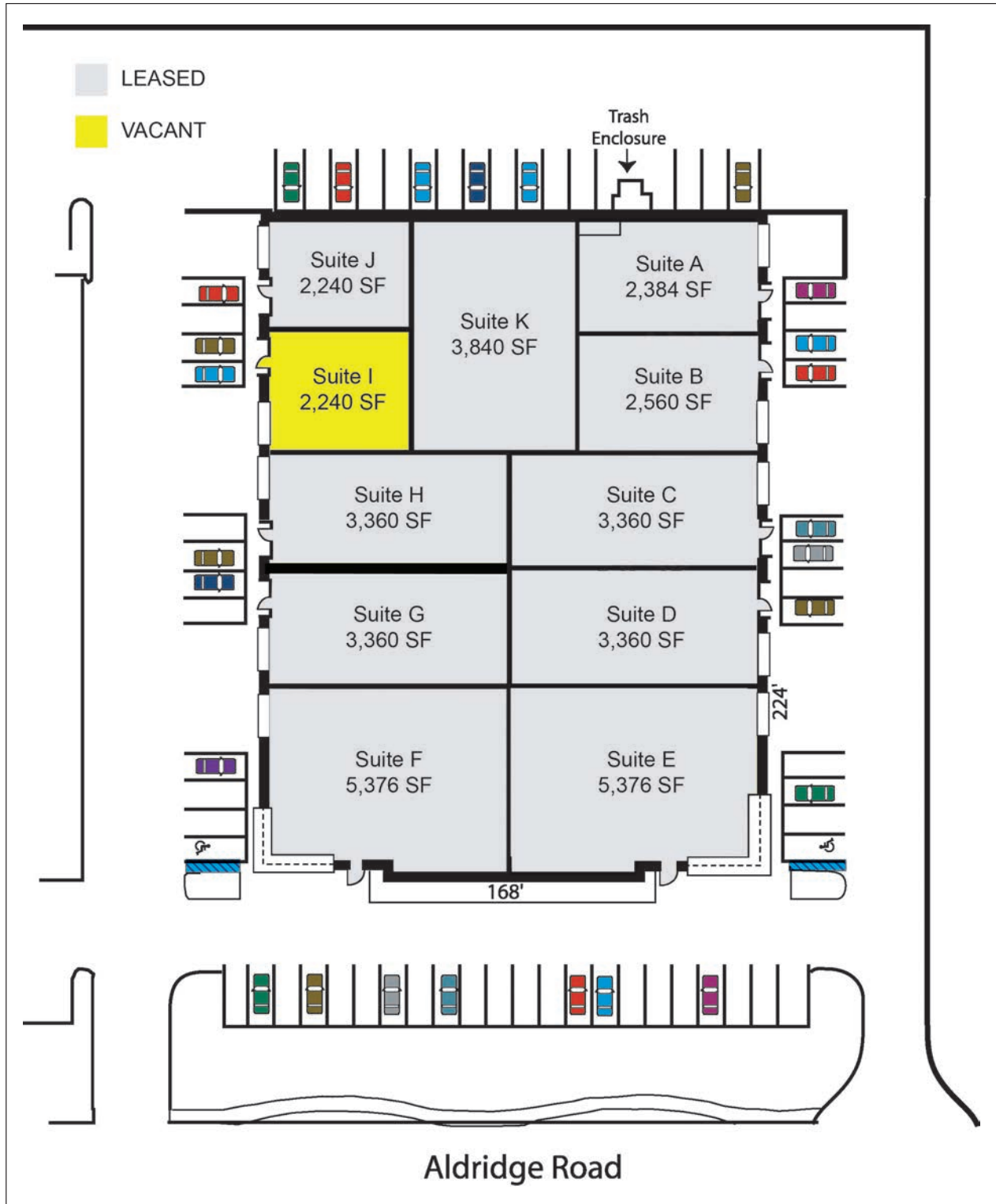
PETRINI COMMERCIAL

2333 Courage Drive, Suite H
Fairfield, CA 94534
www.petrinicommercial.com

FOR LEASE

SUITE I: ±2,240 SF

1031 Aldridge Road, Vacaville, CA



CHRIS PETRINI

CA License No. 01020505

petrini.commercial@gmail.com

Cell +1 510.507.8665

PETRINI COMMERCIAL

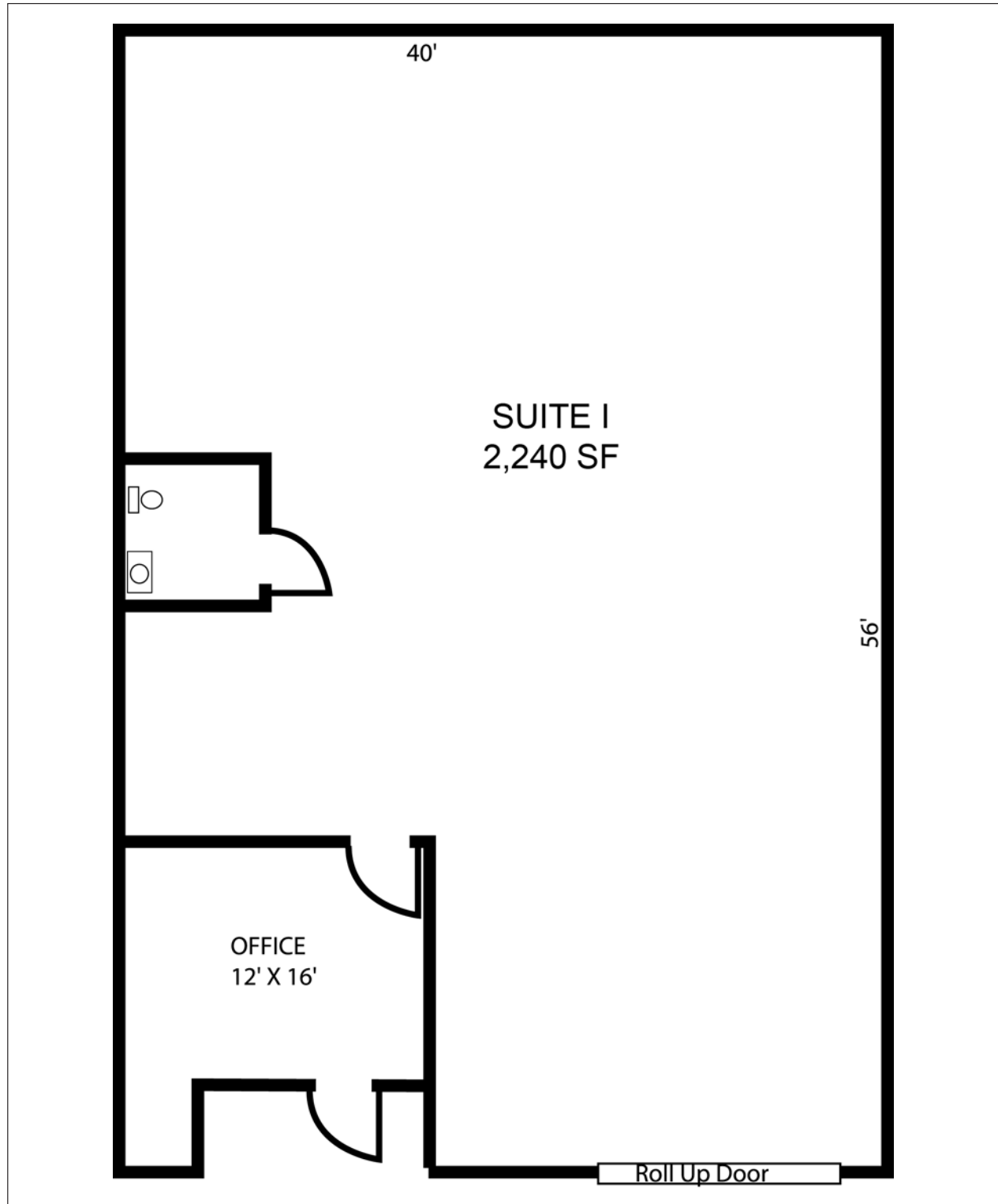
2333 Courage Drive, Suite H

Fairfield, CA 94534

www.petrinicommercial.com

FOR LEASE
SUITE I: ±2,240 SF

1031 Aldridge Road, Vacaville, CA



CHRIS PETRINI
CA License No. 01020505
petrini.commercial@gmail.com
Cell +1 510.507.8665

PETRINI COMMERCIAL
2333 Courage Drive, Suite H
Fairfield, CA 94534
www.petrinicommercial.com